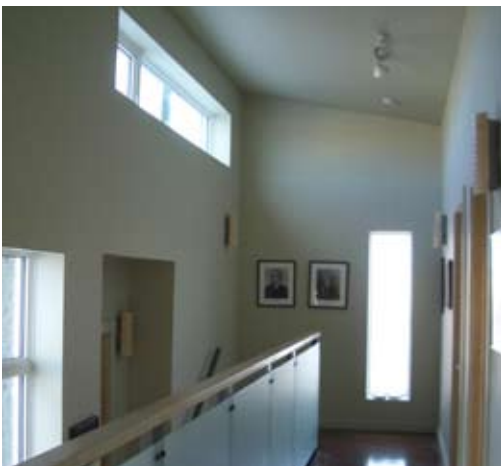




# CABLE HOUSE RESIDENCE

WHITEHORSE, YUKON



Cable House was designed for the Commissioner of the Yukon Territory. The 2,500 square foot house will serve as a primary residence for the Commissioner and entertainment venue for official government functions. A bi-level design approach at the main entrance captures the dual purpose of this residence.

A former soldier, practicing engineer and lawyer, the client chose to shun many of the materials that dominate the residential landscape of Whitehorse. A fondness for harder, tougher materials, garnered during his military career led to a selection of materials that includes corrugated metal siding, steel I beams, brick and cor-ten steel.



Window locations were carefully selected to capitalize on the scarce winter sun at this latitude. Southern exposures were opened up to allow for passive solar heating of the concrete slab on the main floor. There is approximately 19 hours of daylight on the longest day of the year. Steel awnings on the south side have been designed to passively moderate this intense summer sun.